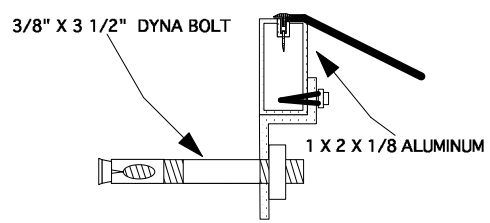
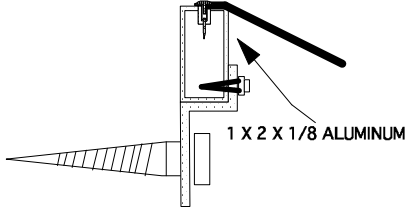


TYPICAL MOUNTING DETAILS



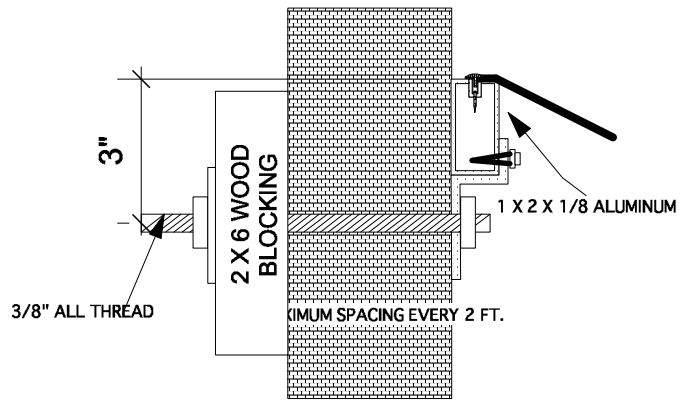
MAXIMUM SPACING EVERY 2 FT.

**DETAIL OF HEAD
BRICK MOUNT**

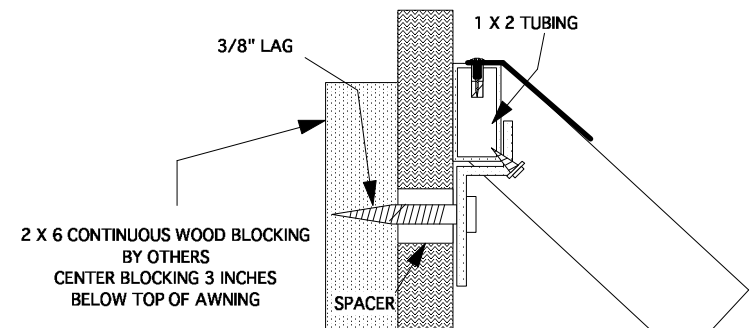


MAXIMUM SPACING EVERY 2 FT.

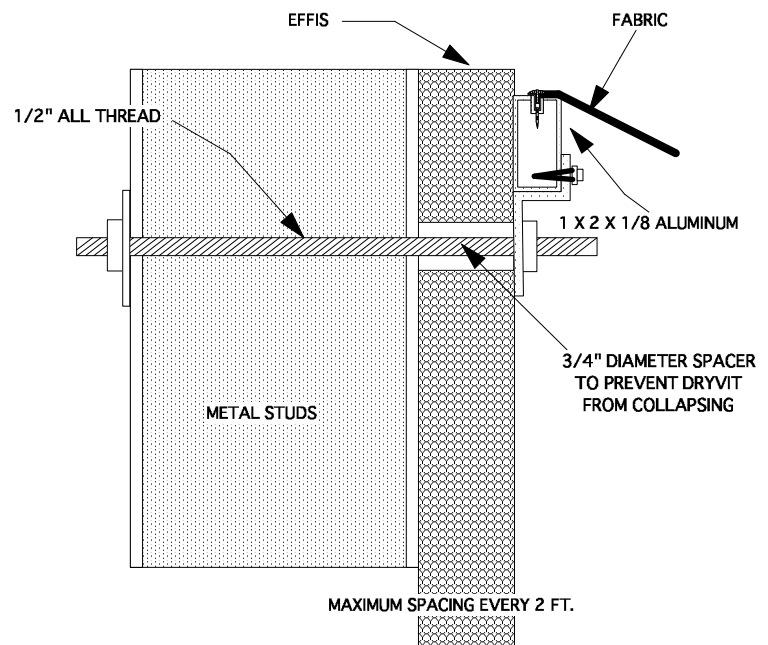
**DETAIL OF HEAD
WOOD MOUNT**



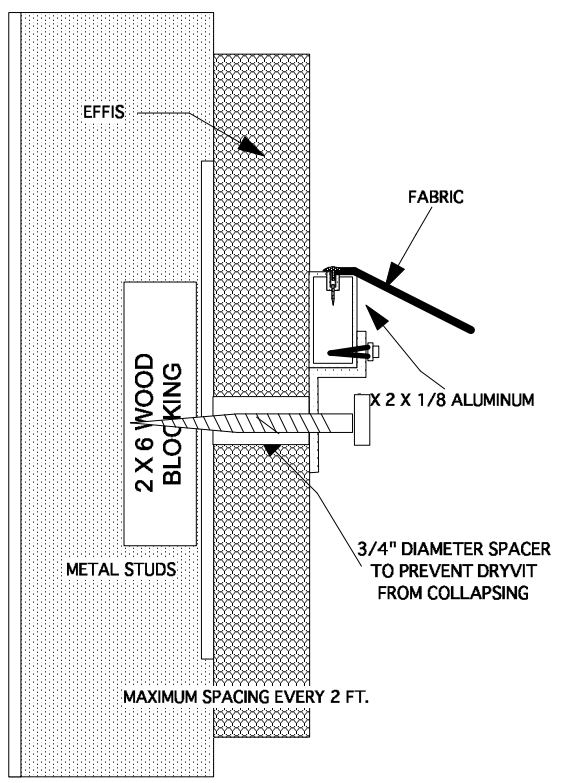
**HEAD DETAIL
OF THROUGH BOLT BRICK MOUNT**



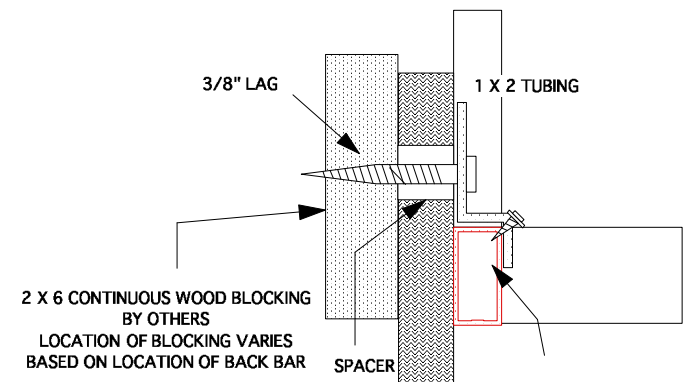
**DETAIL OF HEAD
FABRIC ATTACHMENT
EFFIS WALL MOUNT**



**HEAD DETAIL
OF THROUGH BOLT METAL STUDS**

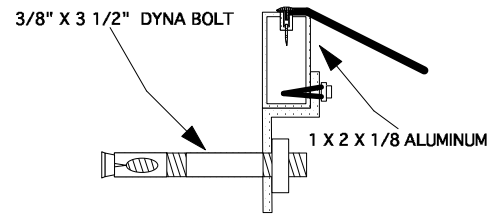


**HEAD DETAIL
WOOD BLOCKING WITH METAL STUDS**



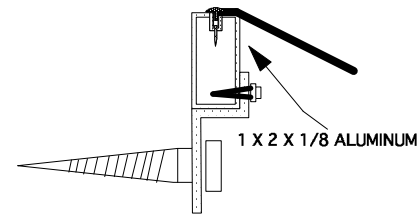
**DETAIL OF BACKBAR
EFFIS WALL ATTACHMENT**

TYPICAL FABRIC ATTACHMENT



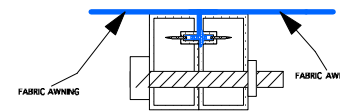
MAXIMUM SPACING EVERY 2 FT.

**DETAIL OF HEAD
BRICK MOUNT**

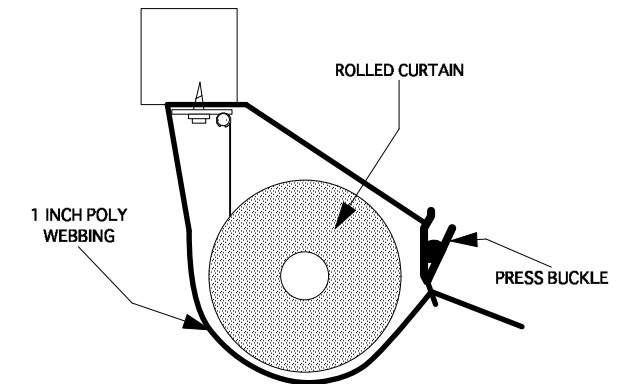


MAXIMUM SPACING EVERY 2 FT.

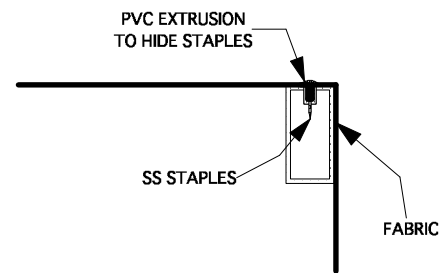
**DETAIL OF HEAD
WOUND MOUNT**



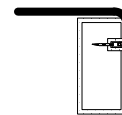
**SECTION VIEW OF FABRIC
ATTACHMENT WHERE SECTIONS JOIN**



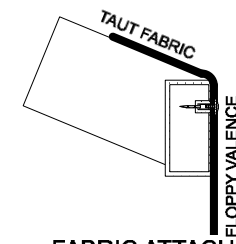
**SIDE VIEW OF ATTACHMENT
AT TOP OF CURTAIN**



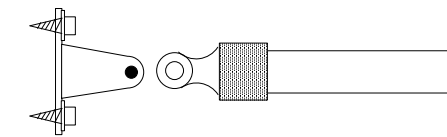
**FABRIC ATTACHMENT
AT END RAFTERS
WHEN THE AWNING HAS WINGS**



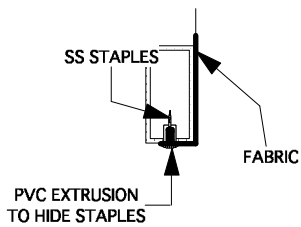
**FABRIC ATTACHMENT
AT END RAFTERS
WHEN THE AWNING HAS NO WINGS**



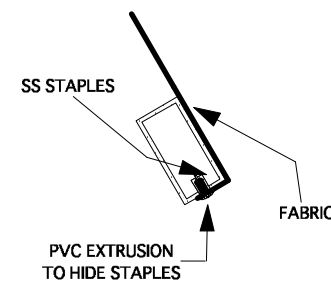
**FABRIC ATTACHMENT
AT FRONT BAR WITH
FLOPPY VALENCE**



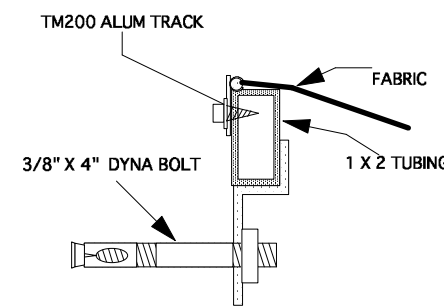
**ROLLER TUBE AT BOTTOM OF CURTAIN
TUBE SLIDES INTO A POCKET**



**FABRIC ATTACHMENT
AT VALENCE BAR**

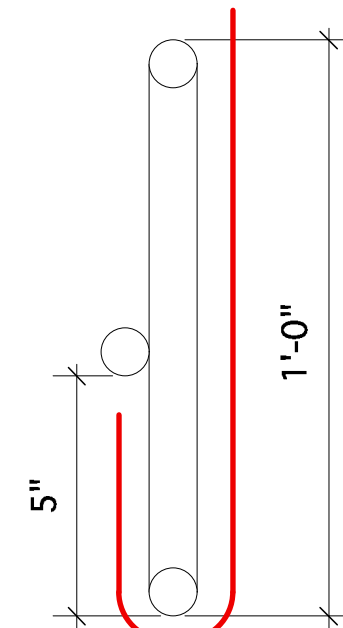


FABRIC ATTACHMENT



MAXIMUM SPACING EVERY 2 FT.

**DETAIL OF HEAD
USING TRACK**



**FABRIC WRAPS & LACES USING BRASS
GROMMETS SPACED EVERY 6"**

NEARLY OBSOLETE METHOD OF FABRICATION

TYPICAL UPRIGHT CONFIGURATION

